

# EDUCATION EXPO

May 2026

## Dates:

May 4, 6, 11, 15, 18, 27

S	M	T	W	Th	F	S
					1	2
3	4	5	6	7	8	9
10	11	12	13	14	15	16
17	18	19	20	21	22	23
24	25	26	27	28	29	30
31						

## Time:

See Schedule for Class Times

\*\*\*You'll need to choose your class times in HealthStream\*\*\*

## Location:

CRMC East Campus  
2600 East 18<sup>th</sup> Street  
(Basement/1<sup>st</sup> floor)



Cheyenne Regional  
Medical Center



## Inside this Issue:

General Information	2
Mandatory, Essential, and Optional Education/ Training Policy Review	3
Classroom Locations	3
In-Person Class Offerings	4
Equipment Rodeo	9
HealthStream Class Offerings	11
Daily Class Schedule	14

## More Information:

Contact: Professional Development  
(O) 307-996-4744  
ProfessionalDevelopment@crmcwy.org

Educational Expo is designed for the purpose of ensuring Clinical Staff receive timely education to address mandatory requirements or elective education that adds value to clinical practice.



Due to unforeseen circumstances class schedules could change.

The most up-to-date schedule can be found at:

[Hospital Intranet](#)>  
[Departments](#)>  
[Professional Development](#)>  
[Education Expo](#)

## Registration/Schedules

- You will be assigned the courses that you are required to attend; however, you need to log-in to HealthStream and choose the course time that works best for your schedule.
  - Please refer to the brochure and daily class schedule to plan your day.
  - Our goal is to assist you in meeting your course requirements in one day if you desire to do this.
- To sign-up for an optional class, please go to the catalog in HealthStream and search for the course that you would like to take. Then please select the specific class time you would like to attend.
- To search for courses in HealthStream you can search using the displayed titled in this brochure.

## Cancellations/No Shows

- If you have registered for a class and are unable to attend that session, please drop your enrollment in the class to free up your seat for someone else to register. If it is less than 24 hours prior to the start of the class, please notify Professional Development that you are dropping your class by calling: (307) 996-4744.
- You must provide notice that you will not attend a class a minimum of 2 hours prior to your registered class(es). If you do not provide notice, this will be reported to your unit manager and counted as a no show.
- If you have to cancel and are not registered for a class and plan to attend as a walk-in, please be aware that participation is subject to instructor approval and available space. Do not assume that walk-in spots will be available.

## Parking/Attire/Evaluation

- Please park in the designated parking lots at the CRMC East Campus.
- Course Participants should follow the hospital professional appearance policy. For education, you should wear Business Casual or Scrubs. Workout clothing, shorts, hats, and other casual wear is not appropriate attire.
- Please take the time to fill out the course evaluations. Suggestions are used to plan future education events and offerings. We welcome all feedback and routinely make changes based on the feedback we receive.

## Questions

- For additional assistance with your schedule or other questions, please contact your unit educator or the Professional Development Team. [ProfessionalDevelopment@crmcwy.org](mailto:ProfessionalDevelopment@crmcwy.org) or (307) 996-4744.
- If you have concerns about scheduling your classes, please talk to your manager or educator.

# Mandatory, Essential, and Optional Education/Training Policy

## Classroom Locations

### Basement Level

Grand Teton

Warren

### 1st Floor Level

Capital

Cottonwood & Simulation Lab

Crow Creek

Multi-Purpose Room

Gannett Peak

Legion Park (Computer Lab)

Meadowlark

Simulation Lab

White Buffalo (Computer Lab)

## Policy # 04.06.001

- Helps staff understand their obligations for training and educational events at Cheyenne Regional.
- Please refer to the policy for full definitions and understanding of consequences for failing to meet the training requirements.
  - All course titles in the brochure will indicate how the events are classified: Mandatory, Essential, or Optional
- Exceptions:
  - Staff on FMLA have 10 calendar days from their return-to-work date to complete mandatory education and training.

### Mandatory

- Definition:
  - Learning events or certifications that must be maintained as part of an employee's job description.
  - Learning events or competencies required to meet regulatory compliance with governing agencies to maintain accreditation and/or hospital policy.
  - Agency staff are required to meet the mandatory requirements.
- Consequences for failing to meet Mandatory Education and Training:
  - Employee will be issued a suspension and placed on unpaid leave. The Employee will not be allowed to work, utilize PTO, or accumulate any further pay until the Mandatory Education/Training is completed.
- If not completed within 10 calendar days after the due date requirements, the employee may be officially terminated.

### Essential

- Definition:
  - Learning events necessary to maintain patient safety and ensure staff are performing within optimal standards per their role.
  - Learning events that alert staff to ongoing policy updates, procedures, and new equipment.
  - Agency staff may not be required to participate in Essential Training based on managers assessment of how the new equipment or protocols will impact the agency staff member's practice.
- Consequences for failing to meet Essential Education and Training:
  - The consequences for failing to meet Essential Education/Training shall follow Policy # 4.04.001 Corrective Action, based on the leader's evaluation of the circumstances.
- Individuals who miss Essential Education/Training are required to make up education as offered.

### Optional

- Definition:
  - Education that staff can choose to participate in or not.
- This type of training and education may be used to enhance current knowledge on a subject or as part of an employee's professional development.

# In-Person Class Offerings

## Mandatory and Essential Classes:

These have been assigned in your HealthStream account under the "To Do" tab. Please check dates, times, and locations in HealthStream and enroll in a class that works for you. Please drop from classes if you cannot attend. If you drop a class and do not sign up for another, do not assume that a walk-in spot is available, this is based on instructor approval only.

**\*\*\*No Shows will be reported to unit managers \*\*\***

## Optional Classes:

These classes are available in HealthStream for pre-registration. To sign-up for these courses, look for the program title in the catalog section of HealthStream using the name listed.



Mandatory

### Annual Competency: CNA 2 - IV Dressing Changes

CNA II's will demonstrate how to change an IV dressing using aseptic technique, label dressing, replace caps, and document in EPIC.

**Approximate time to complete: 10 mins**

### Required for:

- All CNA 2

Mandatory

### Annual Preceptor CE Course: Feedback That Fits -

### Matching Your Message to Every Style

Each year, Certified Preceptors need to complete 3 hours of CE to maintain their preceptor status. This year, staff will complete a 1 hour online module and this 2 hour live class. This preceptor CE class will review the DISC assessment tool in order to learn how to effectively communicate with new staff, provide feedback, and also explore how to receive feedback ourselves. Feedback allows growth and quality patient care, so this course will provide preceptors with valuable information on how to be successful in identifying when and how feedback should be provided.

### Required for:

- All certified preceptors who were certified before **Jan 1, 2026.**

\*\*Cheyenne Regional Medical Center is approved as a provider of nursing continuing professional development by Colorado Nurses Association, an accredited approver by the American Nurses Credentialing Center's Commission on Accreditation. None of the planners or presenters for this activity have relevant financial relationships with ineligible companies to disclose. None of the planners or presenters for this activity have relevant financial relationships with ineligible companies to disclose. 2.0 contact hour(s) will be awarded upon attendance at the entire activity and completion of the evaluation.

**Approximate time to complete: 2 hours**

# In-Person Class Offerings

<p><b>Mandatory</b></p>	<p align="center"><b><u>Tower Nurse Annual Competency: Nurse Collect</u></b></p> <p>Nurses will successfully perform steps to obtain labs through central lines, then print and label tubes in the correct order.</p> <p align="center"><b>Approximate time to complete: 15 mins</b></p>	<p><b><u>Required for:</u></b></p> <ul style="list-style-type: none"> <li>• 3-2: RN, LPN</li> <li>• 6-2: RN</li> <li>• 7-2: RN, LPN</li> <li>• 8-2: RN, LPN</li> <li>• Resource: RN</li> </ul>
<p><b>Mandatory</b></p>	<p align="center"><b><u>CARF 2026 Stroke Rehabilitation Care for Nursing Staff</u></b></p> <p>Nurses will learn care considerations related to specific deficits for the patient diagnosed with stroke in the acute rehabilitation setting. Realms of focus in this course include processing delay, repositioning, neglect, and dysphagia.</p> <p align="center"><b>Approximate time to complete: 1 hour</b></p>	<p><b><u>Required for:</u></b> ARU: RN, CNA, rehab techs</p> <p><b><u>Optional for:</u></b> Resource: RN, CNA SONU: RN, LPN, CNA</p>
<p><b>Mandatory</b></p>	<p align="center"><b><u>CARF 2026 Stroke Equipment Rodeo for PT &amp; OT</u></b></p> <p>Physical Therapy and Occupational Therapy staff will demonstrate competency in utilizing equipment related to the rehabilitation of patients diagnosed with stroke. The equipment to be reviewed are the single axle wheelchair, NuStep, LiteGait, parallel bars, and mirror therapy.</p> <p><small>**Cheyenne Regional Medical Center is approved as a provider of nursing continuing professional development by Colorado Nurses Association, an accredited approver by the American Nurses Credentialing Center's Commission on Accreditation. None of the planners or presenters for this activity have relevant financial relationships with ineligible companies to disclose. None of the planners or presenters for this activity have relevant financial relationships with ineligible companies to disclose. 1.0 contact hour(s) will be awarded upon attendance at the entire activity and completion of the evaluation.</small></p> <p align="center"><b>Approximate time to complete: 1 hour</b></p>	<p><b><u>Required for:</u></b> ARU: PT, PTA, OT, COTA</p>

## Essential

**Quality in Action: How Nursing Practice Shapes Pain Outcomes and Fall Reduction**

This course provides a focused review of best practices in fall prevention and pain management. Learners will examine the organizational fall prevention policy and reinforce understanding of how and when to implement appropriate fall precautions. The course also emphasizes accurate pain assessment and timely reassessment, highlighting the role of implicit bias in clinical decision-making. Nurses will apply evidence-based pain scales and integrate patient-centered care approaches to pain treatment across diverse patient populations.

**\*\*\*CNA's will be dismissed after the Fall Reduction portion of the class\*\*\***

\*\*Cheyenne Regional Medical Center is approved as a provider of nursing continuing professional development by Colorado Nurses Association, an accredited approver by the American Nurses Credentialing Center's Commission on Accreditation. None of the planners or presenters for this activity have relevant financial relationships with ineligible companies to disclose. None of the planners or presenters for this activity have relevant financial relationships with ineligible companies to disclose. 1.5 contact hour(s) will be awarded upon attendance at the entire activity and completion of the evaluation.

**Approximate time to complete: 1.5 hours**

**Required for:**

3-2: RN, LPN, CNA

6-2: RN, CNA

7-2: RN, LPN, CNA

8-2: RN, LPN, CNA

Resource: RN, CNA, RCT

ARU: RN, CNA

SDS: RN, CNA



“A good teacher can inspire hope, ignite the imagination, and instill a love of learning.”

--Brad Henry



## Essential

**Critical Care Skills Lab: Belmont, Mass Transfusion Protocol, & IO**

In this Critical Care Skills Lab, participants will review the use of the Belmont Rapid Infuser, including basic setup, operation, troubleshooting, and maintenance as it pertains to their scope of practice. The session will also include an overview of CRMC's Massive Transfusion Protocol (MTP).

Participants will also receive essential training on Intraosseous (IO) access, including equipment, insertion sites, and contraindications. As part of this annual competency, each participant will demonstrate IO insertion and removal.

**Approximate time to complete: 30 mins**

**Required for:**

ED: RN, Medic, Tech  
ICU: RN  
ARR  
WCS: RN, OB tech

**Optional for:**

Resource: RN  
PACU

## Essential

**Code Yellow**

This course reviews the factors that contribute to escalating behavior, and builds practical skills in verbal and non-verbal communication, trauma-informed care, situational awareness, and coordinated team response.

Through realistic scenarios and guided practice, participants learn to defuse conflict while maintaining a safe therapeutic environment.

**Approximate time to complete: 1 hour**

**Required for:**

BHS: RN, LPN, Psych tech, MH Case Manager, MH Therapist  
ED: MH RN  
Resource: RN, CNA

**Optional for:**

CPI Certified Staff

## Essential

**Neonatal Skills Lab: Panda Infant Warmer & MedFusion 4000 Syringe Pump**

This hands-on course will provide practical training and application on the use of the GE Panda Infant Warmer and the MedFusion 4000 syringe pumps using a case-based clinical scenario in neonatal emergencies. Participants will gain foundational skills in equipment setup, operation, troubleshooting, and safe patient care application.

**Approximate time to complete: 30 mins**

**Required for:**

WCS: RN, OB techs, CNA, Lactation  
ED: RN, Medics, techs

**Optional for:**

Resource: RN

All staff that did not complete during the January EXPO & all new hires after Jan 1, 2026.

Mandatory

Makeup

**The Blue Band Initiative:  
Promoting Awareness and  
Safety in Maternal Health**

The Blue Band Initiative is a multidisciplinary approach designed to improve awareness, communication, recognition, and treatment. This approach focuses on pregnant and postpartum patients at an elevated risk for complications from hypertensive disorders in pregnancy.

**\*\*\*\*Only Offered May 4 and May 15 \*\*\*\***

\*\*Cheyenne Regional Medical Center is approved as a provider of nursing continuing professional development by Colorado Nurses Association, an accredited approver by the American Nurses Credentialing Center's Commission on Accreditation. None of the planners or presenters for this activity have relevant financial relationships with ineligible companies to disclose. None of the planners or presenters for this activity have relevant financial relationships with ineligible companies to disclose. 1.5 contact hour(s) will be awarded upon attendance at the entire activity and completion of the evaluation.

**Approximate time to complete: 1.5 hours**

**Required for:**

- WCS: RN, OB techs, CNA, Lactation
- ED: RN, Medics, techs

**Optional but strongly encouraged:**

- ARR
- Resource: RN

Essential

Makeup

**Reducing Ventilator Days**

Utilizing Daily Awakening Trails (DAT) and recognizing and treating pain, agitation, and delirium (PAD)

will reduce ventilator days and decrease patient complications.

We will be discussing sedation medications, standardized process for DAT and review patient exclusions and considerations.

**\*\*\*\*Only Offered May 11\*\*\*\***

**Approximate time to complete: 1 hour**

**Required for:**

- ICU: RN
- Respiratory Therapy

**Optional for:**

- ARR
- Resource: RN



“Education doesn’t just build skill - it builds the confidence to lead when it matters most.”

<p><b>Mandatory</b>    <b>Makeup</b></p>	<p align="center"><b><u>SafeNSound Refresher</u></b>                  SafeNSound (SNS) is a tool that facilitates monitoring, documentation, and communication with Telemetry and Spacelab monitors. In addition, SNS can assist clinical staff in ensuring timely and accurate monitoring of patient rhythms. Lastly, this class will review important considerations when transferring patients, how Rover can be helpful, and the importance of timely implementation of Telemetry monitoring.  <b>*****Only Offered May 11 and May 27*****</b>  <b>Approximate time to complete: 1 hour</b></p>	<p><b><u>Required for:</u></b></p> <ul style="list-style-type: none"> <li>• 3-2: RN, LPN, CNA</li> <li>• 6-2: RN, CNA, Tele Techs</li> <li>• 7-2: RN, LPN, CNA</li> <li>• 8-2: RN, LPN, CNA</li> <li>• ICU: RN, CNA</li> <li>• Resource: RN, CNA, RCT</li> <li>• Dialysis: RN</li> <li>• PACU</li> <li>• Same Day Surgery</li> <li>• ARR</li> </ul>
<p><b>Essential</b>    <b>Makeup</b></p>	<p align="center"><b><u>Limb Loss (CARF 2026)</u></b>  <b><u>Slide Transfer Devices</u></b>                  Learners will discuss amputation management for the patient with lower limb loss and perform a hands-on competency with slide transfer devices.  <b>****Only Offered May 6 ****</b>  <b>Approximate time to complete: 1 hour</b></p> <p><b>All staff that did not complete during the January EXPO &amp; all new hires after Jan 1, 2026.</b></p>	<p><b><u>Required for:</u></b></p> <ul style="list-style-type: none"> <li>• ARU: RN, CNA, Rehab techs, PT, PTA, OT, COTA, ST</li> </ul> <p><b><u>Optional for:</u></b></p> <ul style="list-style-type: none"> <li>• Resource: RN, CNA</li> <li>• SONU: RN, LPN, CNA</li> </ul>
<p><b>Essential</b>    <b>Makeup</b></p>	<p align="center"><b><u>Pediatric Skills Lab</u></b>                  Participants will work through an unfolding case scenario on pediatric DKA and review the pediatric asthma protocol and bronchiolitis/HHFNC, as well as complete a pediatric code cart review to increase competence in knowledge and skill of high-risk, low frequency DKA and code cart scenarios and review high frequency but problem-prone protocols for asthma and HHFNC.  <b>****Only Offered May 4 &amp; May 15****</b>  <b>Approximate time to complete: 1 Hour</b></p> <p><b>All staff that did not complete during the January EXPO &amp; all new hires after Jan 1, 2026</b></p>	<p><b><u>Required for:</u></b></p> <ul style="list-style-type: none"> <li>• WCS: RN</li> <li>• Pharmacists (DKA only)</li> <li>• ED: RN, Medics</li> </ul> <p><b><u>Optional for:</u></b></p> <ul style="list-style-type: none"> <li>• Resource: RN</li> <li>• ARR</li> <li>• Respiratory Therapy</li> </ul>

## Equipment Rodeo—Drop-in Booth—Essential

### We will be closing the Equipment Rodeo:

- **For the day @ 3:30 pm**
- **Please plan to arrive early enough to complete your activities before closing.**
- **For this Education EXPO the Equipment Rodeo will be in different locations, please check the brochure for locations and follow signs!**

The Instructor Led Stations will be closed for 30 minutes each day for the instructors to have lunch. We will close the doors at 11:30 so everyone can be completed by 12:00. Instructors will go to lunch from 12:00-12:30.

Stop by before or after your classes to learn some new equipment and refresh your knowledge on existing equipment or process changes.

### Instructor Led Learning Events:

#### Main Classroom Hallway - 1<sup>st</sup> floor:

- Academic Partner Education Booths

#### Capital Classroom - 1<sup>st</sup> Floor:

- From Call to Record: Language Interpretation and Documentation Using ROVER
- Lumason Administration & Agitated Saline Administration
- New Feeding Pump
- Point of Care: Glucometer, iStat, ED Point of Care, UPreg

#### Meadowlark Classroom - 1<sup>st</sup> Floor:

- Restraint Training: Chair, Soft Restraints (if not able to be done on your unit), RN training, ancillary training
- **Make up:** Adenosine at Bedside: Compounding for the Single Syringe Technique

#### RQI Room (by MPR and bathrooms) - 1<sup>st</sup> Floor:

- NRP for RQI

## Remember Your Badge

*Utilize the scanners at each booth to "sign" the roster and obtain credit for attending. Once you scan your badge and hear the beep, you have been registered.*

**Approximate time to complete: 30-90 minutes**

**\*\*\*Time required depends on your specific requirements\*\*\***

# Scan for Attendance

*Rosters Made Simple*

**Ensure you're receiving credit by scanning your badge with the provided scanner. There is not a specific badge or barcode, if the scanner beeps the barcode has been accepted.**





If HealthStream class offerings are required for you to complete, they will be assigned to you in your HealthStream account starting on or before **May 1st**.

**Mandatory**

**Restraint Training & Competency**

This course provides a focused review of the safe, ethical, and compliant use of restraints at CRMC.

Participants learn when restraints may be appropriate, required documentation, regulatory expectations, and effective alternatives such as de-escalation and environmental modification. Through policy review and return demonstration, the course reinforces key practices that support informed, patient-centered decisions and promotes safety for both patients and caregivers.

**Assignments will vary based on job code/department:**

*Restraint Chair*

*1 Hour Face to Face Education*

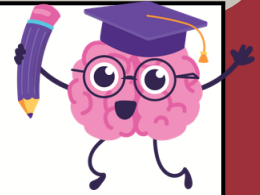
*RN Competency*

*Ancillary Staff Competency*

**Approximate time to complete: Varies**

**Required for:  
Restraint Chair**

- ED
- BHS
- ARR
- Resource



**1 Hour Face to Face Education**

- ED: Charge RN
- ARR
- BHS: Charge RN

**RN Competency & Ancillary Staff Competency**

- 3-2: RN, LPN, CNA
- 6-2: RN, CNA
- 7-2: RN, CNA
- 8-2: RN, CNA
- Resource: RN, CNA
- ARU: RN, CNA, Rehab techs
- ED: RN, MH RN, Medic, Tech
- ICU: RN, CNA
- ARR
- SDS
- PACU
- WCS: RN, CNA, OB Tech
- BHS: RN, LPN, Tech
- Dialysis: RN
- Physical Therapy
- Occupational Therapy
- Respiratory Therapy
- Speech Therapy
- MIH: Transport tech, Clinician
- Cath Lab: RN, IR Tech, Cardio tech, Echo tech

**Essential**

**Wound LDA: Revisiting Wounds, Wound Care, & Documentation**

This course provides a focused refresher on wound assessment, evidence-based wound care practices, and accurate documentation within the LDA (Lines, Drains, & Airways) system. Learners will learn how to strengthen their ability to document wound characteristics and care consistently in the electronic health record.

**Approximate time to complete: 20 mins**

**Required for:**

- 3-2: RN, LPN
- 6-2: RN
- 7-2: RN, LPN
- 8-2: RN, LPN
- Resource: RN
- ARU: RN
- ICU: RN
- ARR
- ED: RN, Medics
- WCS: RN
- BHS: RN
- Inpt Wound Care: RN

**Mandatory**

**ESI/Triage Annual Competency**

This E-Learning and self-auditing course will serve as one of the FY 2026 ED Annual Competencies. In this competency event, ED RNs and ED Medics will review the 5-Tier Emergency Severity Index (ESI) Algorithm and demonstrate competency in clinical decision-making through a case-based scenario quiz. Additionally, each participant will complete and submit a self-audit tools based on one of their own patient charts. Staff members will review the patient's condition, initial presentation, and assessment, then identify and justify the assigned ESI level.

**Approximate time to complete: 1 hour**

**Required for:**

- ED: RN, Medics

**Essential**

**Agitated Saline Administration (Bubble Study)**

This course provides nurses with an overview of the preparation and administration of agitated saline for echocardiography (bubble study). Participants will review clinical indications, proper agitation, and injection techniques, coordination with echocardiographic imaging, and key safety considerations. Upon completion, learners will understand the role of agitated saline in identifying intracardiac shunts and will be prepared to assist with or perform the procedure in a clinical setting.

**Approximate time to complete: 15 mins**

**Required for:**

- 3-2: RN
- 7-2: RN
- 8-2: RN
- Resource: RN

**Essential**

**Code Blue Documentation Video**

This course will review the documentation of a Code Blue. A code blue is a high risk, low frequency skill and therefore, it was identified as an area in which a review would be beneficial. Documentation is an essential part of the resuscitation process. This education will review critical components of Code Blue Documentation.

**\*\*If interested, any RN not assigned this module can search for it in the catalog and complete in on their own.**

**Approximate time to complete: 30 mins**

**Required for:**

- 3-2: Charge RNs
- 6-2: RNs
- 7-2: Charge RNs
- 8-2: Charge RNs
- WCS: Charge RNs
- Resource: PRN Charge RNs

**Optional for:**

- All other RNs

<p>Essential</p>	<p><b><u>Tristel High Level Disinfection Training</u></b> This course will provide an overview of the product Tristel High Level Disinfection Process utilized in the Emergency Department to clean ultrasound probes. The course will cover an overview of the product, step by step cleaning instructions, and safe handling using the product. Please note - you will need to create an account at the Tristel website and submit the certificates of completion that are emailed to you upon completion to your unit professional development specialist. <b>Approximate time to complete: 1 hour</b></p>	<p><b><u>Required for:</u></b></p> <ul style="list-style-type: none"><li>• ED: RN, Medic, Techs</li></ul>
<p>Essential</p>	<p><b><u>Lumason Administration Education</u></b> Nurses will learn how to assist echo technicians in administering Lumason if a patient's ejection fraction is low. This education will provide staff with information on how to mix, administer, and assist with Lumason studies at the patient's bedside. <b>Approximate time to complete: 15 mins</b></p>	<p><b><u>Required for:</u></b></p> <ul style="list-style-type: none"><li>• 3-2: RN</li><li>• 7-2: RN</li><li>• 8-2: RN</li><li>• Resource: RN</li></ul>

“Develop a passion for learning. If you do, you will never cease to grow.”

--Anthony J. D'Angelo



Mandatory

## Point of Care Testing Training & Competency

This course provides essential training and competency in Point of Care testing (POCT). Participants will learn proper specimen collection, device operation, quality control, documentation, and result interpretation. Emphasis is placed on patient safety, infection prevention, and adherence to regulatory and organizational standards. Upon completion, learners will demonstrate proficiency in performing POCT procedures accurately and consistently to support timely, high-quality patient care.

### Assignments will vary based on job code/department:

*Glucometer*

*iStat*

*Special ED Tests*

*UPreg*

**Approximate time to complete: Varies**

### Required for:

#### **Glucometer**

- 3-2: RN, LPN, CNA
- 6-2: RN, CNA
- 7-2: RN, CNA
- 8-2: RN, CNA
- Resource: RN, CNA
- ARU: RN, CNA, Rehab Tech
- ED: RN, MH RN, Medic, Tech
- ICU: RN, CNA
- ARR
- WCS: RN, CNA, OB Tech
- BHS: RN, LPN, Tech
- PACU: RN, CNA
- SDS: RN, CNA
- AIC: RN
- Home Health: RN, CNA
- Cath Lab: RN, CNA, Tech
- Dialysis
- IR
- OR
- Wound Care
- MIH: Transport tech, Clinician

#### **iStat**

- ED: RN, Medic, Tech
- Cath Lab: RN
- IR
- Respiratory Therapy
- MIH: Transport tech, Clinician

#### **Special ED Tests**

- ED: RN, Medic, Tech
- MIH: Transport tech, Clinician

#### **UPreg**

- ED: RN, MH RN, Medic, Tech
- Resource: RN
- MIH: Transport tech, Clinician



Name of Event	7:00-7:30	7:30-8:00	8:00-8:30	8:30-9:00	9:00-9:30	9:30-10:00	10:00-10:30	10:30-11:00	11:00-11:30	11:30-12:00	12:00-12:30	12:30-1:00	1:00-1:30	1:30-2:00	2:00-2:30	2:30-3:00	3:00-3:30	3:30-4:00	
<b>Equipment Rodeo</b> Drop-In Booth		Capital, Meadowlark, Main Hallway, RQI Room 1st Floor								No new admit	Closed for lunch	Capital, Meadowlark, Main Hallway, RQI Room 1st Floor							
<b>CNA 2 IV Dressing Changes</b> HealthStream Sign-up Required		Time: Every 10 mins Crow Creek 1st Floor																	
<b>Annual Preceptor CE</b> HealthStream Sign-up Required														Grand Teton Basement					
<b>Tower Nurse Competency Nurse Collect</b> HealthStream Sign-up Required				Time: Starting every 15 mins Crow Creek 1st Floor															
<b>Critical Care Skills Lab</b> HealthStream Sign-up Required			TIME: Starting every ½ hour Simulation Lab 1st Floor									Every ½ hour Simulation Lab 1st Floor							
<b>Stroke Rehabilitation CARF</b> HealthStream Sign-up Required				Gannett Peak 1st Floor															
<b>PT &amp; OT Equipment Rodeo CARF</b> HealthStream Sign-up Required			ARU Equipment Gym 3rd Floor																
<b>Quality in Action: Nursing Pain Outcomes/Fall Reduction</b> HealthStream Sign-up Required			East Multipurpose Room 1st Floor			East Multipurpose Room 1st Floor						East Multipurpose Room 1st Floor							
<b>Neonatal Skills Lab</b> HealthStream Sign-up Required							TIME: Starting every ½ hour Cottonwood Sim Lab 1st Floor												
<b>Blue Band Initiative</b> HealthStream Sign-up Required				Grand Teton Basement															
<b>Pediatric Skills Lab</b> HealthStream Sign-up Required															Time: Every ½ hour Simulation Lab 1st Floor				
<b>Code Yellow</b> HealthStream Sign-up Required													Gannett Peak 1st Floor						

\*\*\*Our goal is to get you all of the education that you need in one day!

If you are having issues planning your schedule or you have trouble registering for a course, please reach out to Heidi Tatum (307) 996-4733, heidi.tatum@crmcwy.org or Nicole Vorderberg (307) 996-4744, nicole.vorderberg@crmcwy.org for assistance.

Name of Event	7:00-7:30	7:30-8:00	8:00-8:30	8:30-9:00	9:00-9:30	9:30-10:00	10:00-10:30	10:30-11:00	11:00-11:30	11:30-12:00	12:00-12:30	12:30-1:00	1:00-1:30	1:30-2:00	2:00-2:30	2:30-3:00	3:00-3:30	3:30-4:00	
<b>Equipment Rodeo</b> Drop-In Booth		Capital, Meadowlark, Main Hallway, RQI Room 1st Floor								No new admit	Closed for lunch	Capital, Meadowlark, Main Hallway, RQI Room 1st Floor							
<b>CNA 2 IV Dressing Changes</b> HealthStream Sign-up Required		Time: Every 15 mins Crow Creek 1st Floor																	
<b>Annual Preceptor CE</b> HealthStream Sign-up Required														Grand Teton Basement					
<b>Tower Nurse Competency Nurse Collect</b> HealthStream Sign-up Required				Time: Starting every 15 mins Crow Creek 1st Floor															
<b>Critical Care Skills Lab</b> HealthStream Sign-up Required			TIME: Starting every ½ hour Simulation Lab 1st Floor									Every ½ hour Simulation Lab 1st Floor							
<b>Stroke Rehabilitation CARF</b> HealthStream Sign-up Required				Gannett Peak 1st Floor															
<b>PT &amp; OT Equipment Rodeo CARF</b> HealthStream Sign-Up Required			ARU Equipment Gym 3rd Floor																
<b>Quality in Action: Nursing Pain Outcomes/Fall Reduction</b> HealthStream Sign-up Required			East Multipurpose Room 1st Floor				East Multipurpose Room 1st Floor					East Multipurpose Room 1st Floor							
<b>Neonatal Skills Lab</b> HealthStream Sign-up Required								TIME: Starting every ½ hour Cottonwood Sim Lab 1st Floor											
<b>Code Yellow</b> HealthStream Sign-up Required									Gannett Peak 1st Floor			Gannett Peak 1st Floor							
<b>Limb Loss (CARF) Slide TX Devices</b> HealthStream Sign-up Required			Gannett Peak 1st Floor																

\*\*\*Our goal is to get you all of the education that you need in one day!

If you are having issues planning your schedule or you have trouble registering for a course, please reach out to Heidi Tatum (307) 996-4733, heidi.tatum@crmcwy.org or Nicole Vorderberg (307) 996-4744, nicole.vorderberg@crmcwy.org for assistance.

Name of Event	7:00-7:30	7:30-8:00	8:00-8:30	8:30-9:00	9:00-9:30	9:30-10:00	10:00-10:30	10:30-11:00	11:00-11:30	11:30-12:00	12:00-12:30	12:30-1:00	1:00-1:30	1:30-2:00	2:00-2:30	2:30-3:00	3:00-3:30	3:30-4:00
<b>Equipment Rodeo</b> Drop-In Booth	Capital, Meadowlark, Main Hallway, RQI Room 1st Floor									No new admit	Closed for lunch	Capital, Meadowlark, Main Hallway, RQI Room 1st Floor						
<b>CNA 2 IV Dressing Changes</b> HealthStream Sign-up Required	Time: Every 15 mins Crow Creek 1st Floor																	
<b>Annual Preceptor CE</b> HealthStream Sign-up Required													Grand Teton Basement					
<b>Tower Nurse Competency Nurse Collect</b> HealthStream Sign-up Required				Time: Starting every 15 mins Crow Creek 1st Floor														
<b>Critical Care Skills Lab</b> HealthStream Sign-up Required		TIME: Starting every ½ hour Simulation Lab 1st Floor										Every ½ hour Simulation Lab 1st Floor						
<b>Stroke Rehabilitation CARF</b> HealthStream Sign-up Required				Gannett Peak 1st Floor														
<b>PT &amp; OT Equipment Rodeo CARF</b> HealthStream Sign-Up Required		ARU Equipment Gym 3rd Floor																
<b>Quality in Action: Nursing Pain Outcomes/Fall Reduction</b> HealthStream Sign-up Required		East Multipurpose Room 1st Floor				East Multipurpose Room 1st Floor					East Multipurpose Room 1st Floor							
<b>Neonatal Skills Lab</b> HealthStream Sign-up Required								TIME: Starting every ½ hour Cottonwood Sim Lab 1st Floor										
<b>Code Yellow</b> HealthStream Sign-up Required									Gannett Peak 1st Floor			Gannett Peak 1st Floor						
<b>Reducing Ventilator Days</b> HealthStream Sign-up Required			Warren Basement															
<b>SafeNSound Refresher</b> HealthStream Sign-up Required		Legion Park 1st Floor																

\*\*\*Our goal is to get you all of the education that you need in one day!

If you are having issues planning your schedule or you have trouble registering for a course, please reach out to Heidi Tatum (307) 996-4733, heidi.tatum@crmcwy.org or Nicole Vorderberg (307) 996-4744, nicole.vorderberg@crmcwy.org for assistance.

Name of Event	7:00-7:30	7:30-8:00	8:00-8:30	8:30-9:00	9:00-9:30	9:30-10:00	10:00-10:30	10:30-11:00	11:00-11:30	11:30-12:00	12:00-12:30	12:30-1:00	1:00-1:30	1:30-2:00	2:00-2:30	2:30-3:00	3:00-3:30	3:30-4:00
Equipment Rodeo Drop-In Booth		Capital, Meadowlark, Main Hallway, RQI Room 1st Floor									No new admit	Closed for lunch	Capital, Meadowlark, Main Hallway, RQI Room 1st Floor					
CNA 2 IV Dressing Changes HealthStream Sign-up Required		Time: Every 15 mins Crow Creek 1st Floor																
Annual Preceptor CE HealthStream Sign-up Required														Grand Teton Basement				
Tower Nurse Competency Nurse Collect HealthStream Sign-up Required				Time: Starting every 15 mins Crow Creek 1st Floor														
Critical Care Skills Lab HealthStream Sign-up Required		TIME: Starting every ½ hour Simulation Lab 1st Floor										Every ½ hour Simulation Lab 1st Floor						
Stroke Rehabilitation CARF HealthStream Sign-up Required				Gannett Peak 1st Floor														
PT & OT Equipment Rodeo CARF HealthStream Sign-Up Required			ARU Equipment Gym 3rd Floor															
Quality in Action: Nursing Pain Outcomes/Fall Reduction HealthStream Sign-up Required			East Multipurpose Room 1st Floor				East Multipurpose Room 1st Floor					East Multipurpose Room 1st Floor						
Neonatal Skills Lab HealthStream Sign-up Required							TIME: Starting every ½ hour Cottonwood Sim Lab 1st Floor											
Code Yellow HealthStream Sign-up Required									Gannett Peak 1st Floor			Gannett Peak 1st Floor						
Pediatric Skills Lab HealthStream Sign-up Required															Simulation Lab 1st Floor			
Blue Band Initiative HealthStream Sign-up Required				Grand Teton Basement														

\*\*\*Our goal is to get you all of the education that you need in one day!

If you are having issues planning your schedule or you have trouble registering for a course, please reach out to Heidi Tatum (307) 996-4733, heidi.tatum@crmcwy.org or Nicole Vorderberg (307) 996-4744, nicole.vorderberg@crmcwy.org for assistance.

Name of Event	7:00-7:30	7:30-8:00	8:00-8:30	8:30-9:00	9:00-9:30	9:30-10:00	10:00-10:30	10:30-11:00	11:00-11:30	11:30-12:00	12:00-12:30	12:30-1:00	1:00-1:30	1:30-2:00	2:00-2:30	2:30-3:00	3:00-3:30	3:30-4:00										
Equipment Rodeo Drop-In Booth	Capital, Meadowlark, Main Hallway, RQI Room 1st Floor									No new admit	Closed for lunch	Capital, Meadowlark, Main Hallway, RQI Room 1st Floor																
CNA 2 IV Dressing Changes HealthStream Sign-up Required	Time: Every 15 mins Crow Creek 1st Floor																											
Annual Preceptor CE HealthStream Sign-up Required																	Grand Teton Basement											
Tower Nurse Competency Nurse Collect HealthStream Sign-up Required																	Time: Starting every 15 mins Crow Creek 1st Floor											
Critical Care Skills Lab HealthStream Sign-up Required																	TIME: Starting every ½ hour Simulation Lab 1st Floor				Every ½ hour Simulation Lab 1st Floor							
Stroke Rehabilitation CARF HealthStream Sign-up Required																	Gannett Peak 1st Floor											
PT & OT Equipment Rodeo CARF HealthStream Sign-up Required																	ARU Equipment Gym 3rd Floor											
Quality in Action: Nursing Pain Outcomes/Fall Reduction HealthStream Sign-up Required																	East Multipurpose Room 1st Floor				East Multipurpose Room 1st Floor				East Multipurpose Room 1st Floor			
Neonatal Skills Lab HealthStream Sign-up Required																	TIME: Starting every ½ hour Cottonwood Sim Lab 1st Floor											
Code Yellow HealthStream Sign-up Required																	Gannett Peak 1st Floor				Gannett Peak 1st Floor							

\*\*\*Our goal is to get you all of the education that you need in one day!

If you are having issues planning your schedule or you have trouble registering for a course, please reach out to Heidi Tatum (307) 996-4733, heidi.tatum@crmcwy.org or Nicole Vorderberg (307) 996-4744, nicole.vorderberg@crmcwy.org for assistance.

Name of Event	7:00-7:30	7:30-8:00	8:00-8:30	8:30-9:00	9:00-9:30	9:30-10:00	10:00-10:30	10:30-11:00	11:00-11:30	11:30-12:00	12:00-12:30	12:30-1:00	1:00-1:30	1:30-2:00	2:00-2:30	2:30-3:00	3:00-3:30	3:30-4:00
<b>Equipment Rodeo</b> Drop-In Booth		Capital, Meadowlark, Main Hallway, RQI Room 1st Floor									No new admit	Closed for lunch	Capital, Meadowlark, Main Hallway, RQI Room 1st Floor					
<b>CNA 2 IV Dressing Changes</b> HealthStream Sign-up Required		Time: Every 15 mins Crow Creek 1st Floor																
<b>Annual Preceptor CE</b> HealthStream Sign-up Required														Grand Teton Basement				
<b>Tower Nurse Competency Nurse Collect</b> HealthStream Sign-up Required				Time: Starting every 15 mins Crow Creek 1st Floor														
<b>Critical Care Skills Lab</b> HealthStream Sign-up Required			TIME: Starting every ½ hour Simulation Lab 1st Floor									Every ½ hour Simulation Lab 1st Floor						
<b>Stroke Rehabilitation CARF</b> HealthStream Sign-up Required				Gannett Peak 1st Floor														
<b>PT &amp; OT Equipment Rodeo CARF</b> HealthStream Sign-up Required			ARU Equipment Gym 3rd Floor															
<b>Quality in Action: Nursing Pain Outcomes/Fall Reduction</b> HealthStream Sign-up Required			East Multipurpose Room 1st Floor				East Multipurpose Room 1st Floor					East Multipurpose Room 1st Floor						
<b>Neonatal Skills Lab</b> HealthStream Sign-up Required								TIME: Starting every ½ hour Cottonwood Sim Lab 1st Floor										
<b>Code Yellow</b> HealthStream Sign-up Required									Gannett Peak 1st Floor			Gannett Peak 1st Floor						
<b>SafeNSound Refresher</b> HealthStream Sign-up Required		Legion Park 1st Floor																

\*\*\*Our goal is to get you all of the education that you need in one day!

If you are having issues planning your schedule or you have trouble registering for a course, please reach out to Heidi Tatum (307) 996-4733, heidi.tatum@crmcwy.org or Nicole Vorderberg (307) 996-4744, nicole.vorderberg@crmcwy.org for assistance.