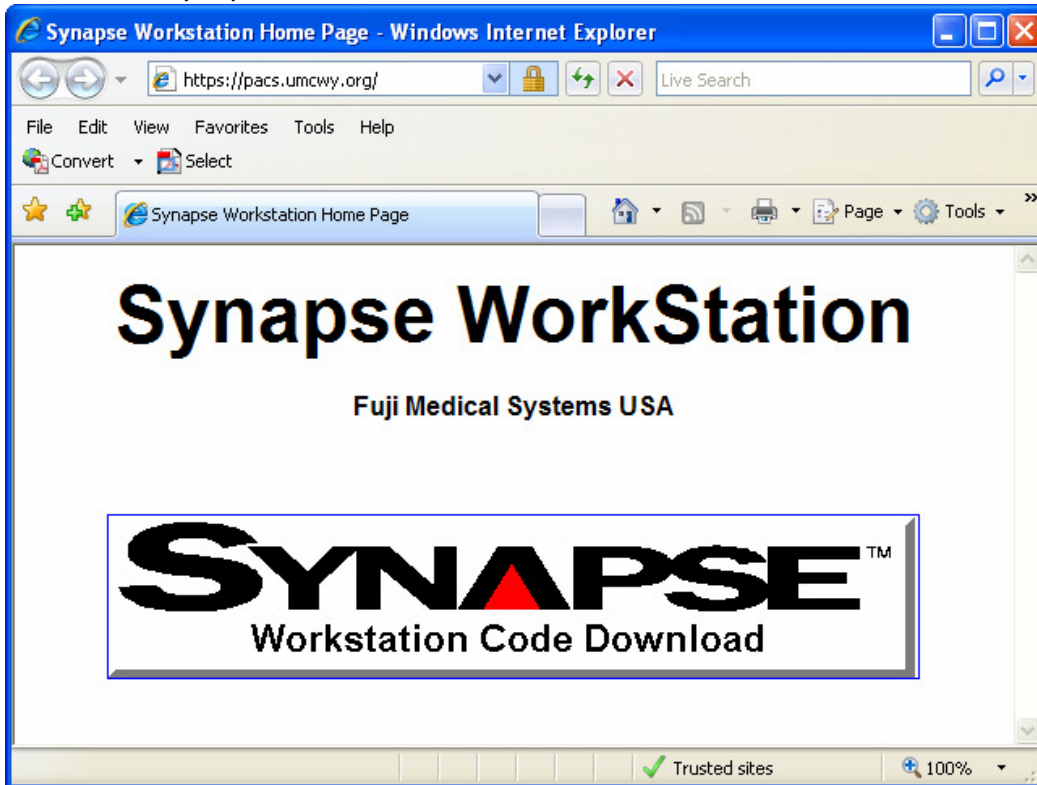


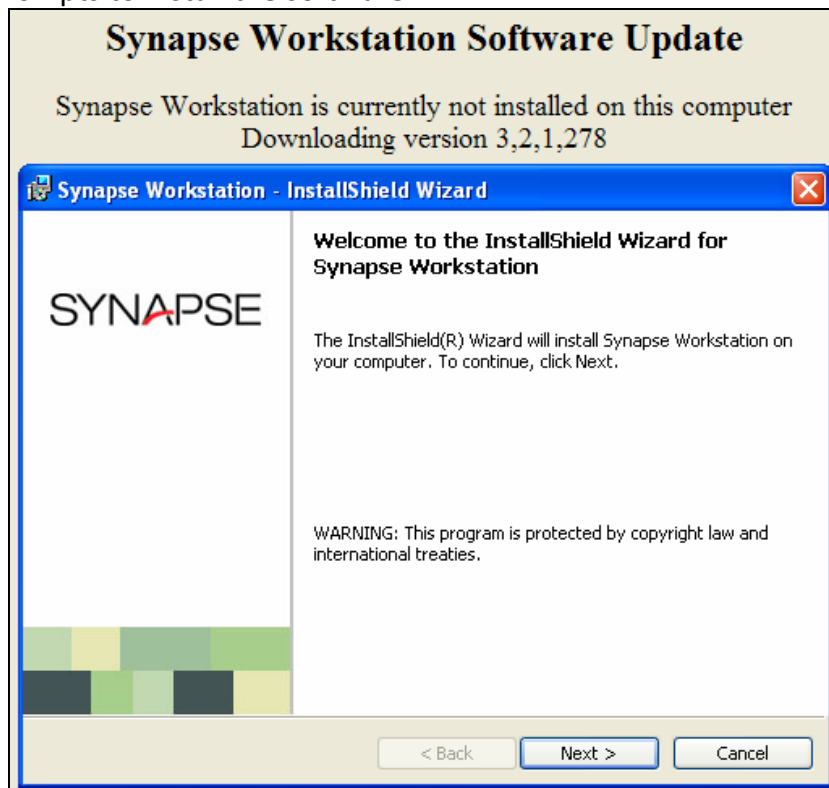
Downloading and Configuring Synapse

Instructions for installing PACS outside CRMC network

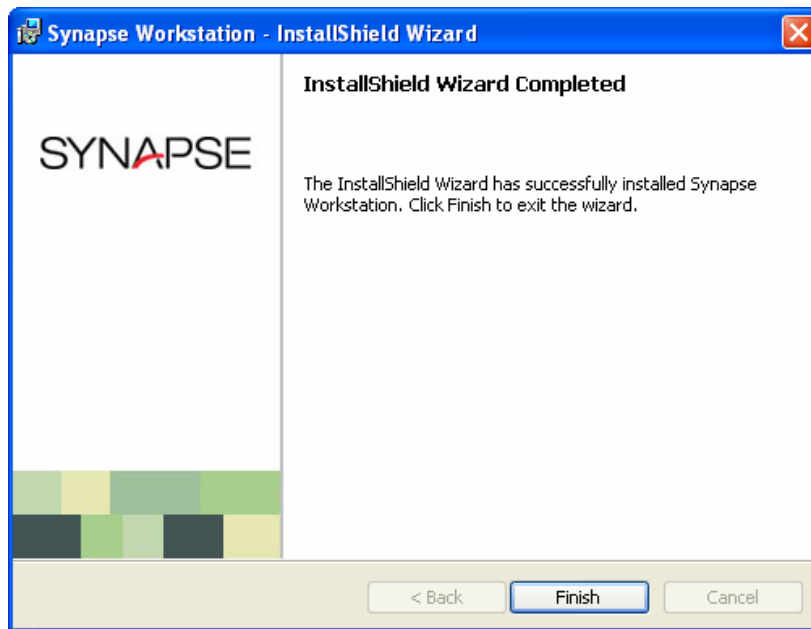
- Open Internet Explorer and type in the address line:
<https://pacs.umcwy.org>
- If prompted to log in, enter your CRMC username (preceded by umcwy\) and your CRMC password.
- Click on the Synapse Workstation Code Download icon.



- Follow all prompts to install the software.



- After download is complete, click Finish and close Internet Explorer.

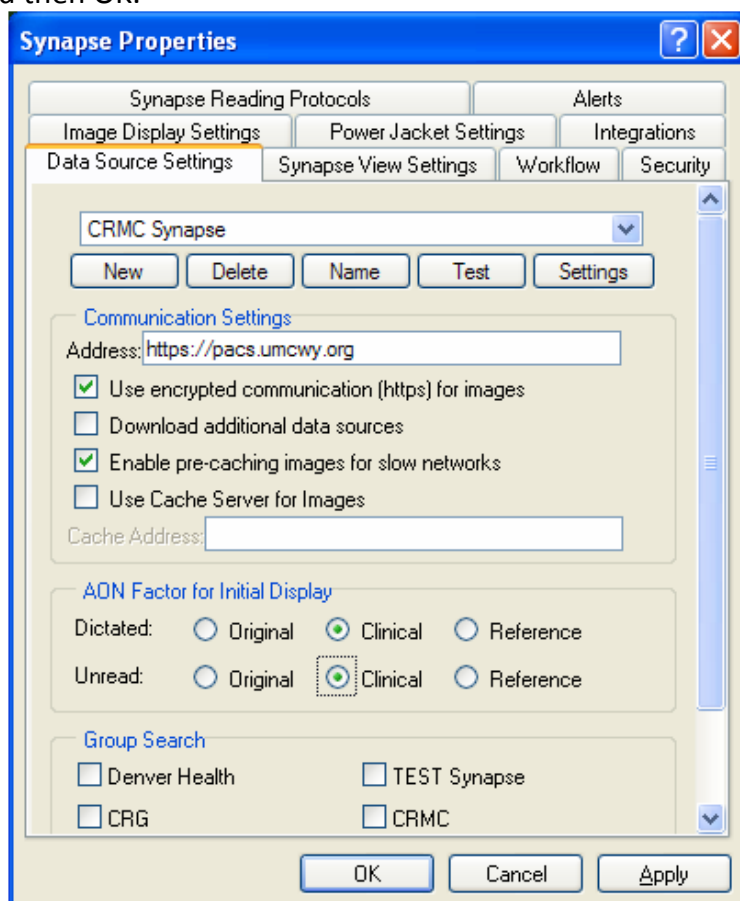


- Right click on the Synapse icon on the desktop and choose Properties.

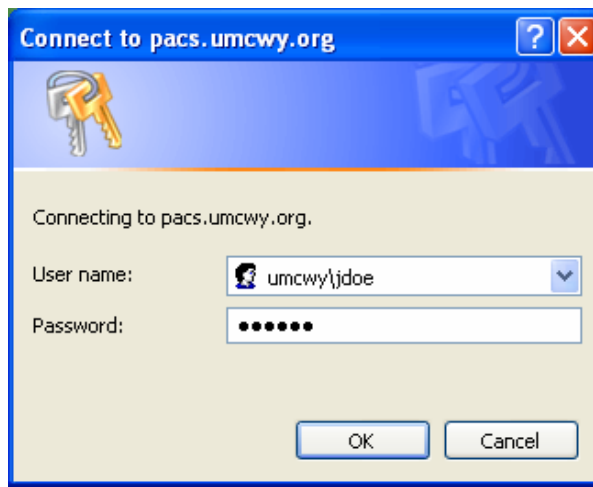


Synapse

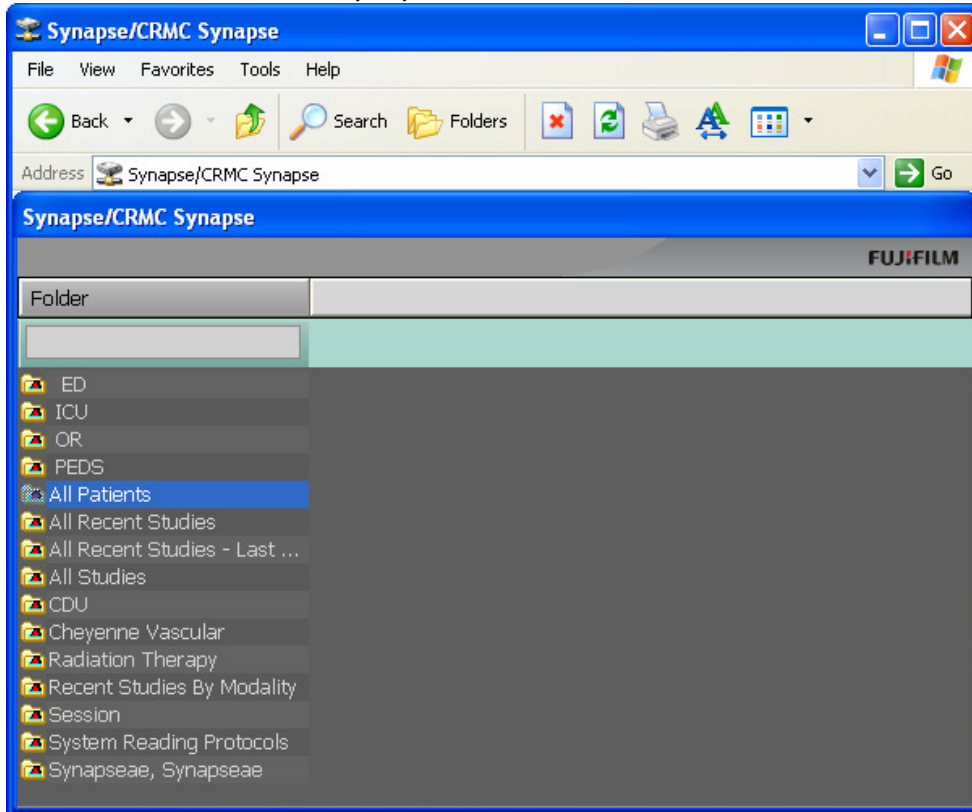
- From the Data Source Settings tab, click NAME and type CRMC Synapse in the top box.
- Make sure the address line reads:
<https://pacs.umcwy.org>
- Check 'Use encrypted communication for images' and 'Enable pre-caching images for slow networks.'
- Set the display to 'Clinical.'
- Click APPLY and then OK.



- Double click on the Synapse icon on the desktop. Then double click on CRMC Synapse.
- When prompted, enter your CRMC username (preceded by umcwy\) and your CRMC password.



- You now have access to CRMC Synapse and can browse all folders.



Questions? Contact RIS/PACS Support:

| | |
|----------------|--------------|
| Kari Trout | 307-633-7805 |
| Ashley Donovan | 307-633-7802 |
| After Hours | 307-630-1071 |