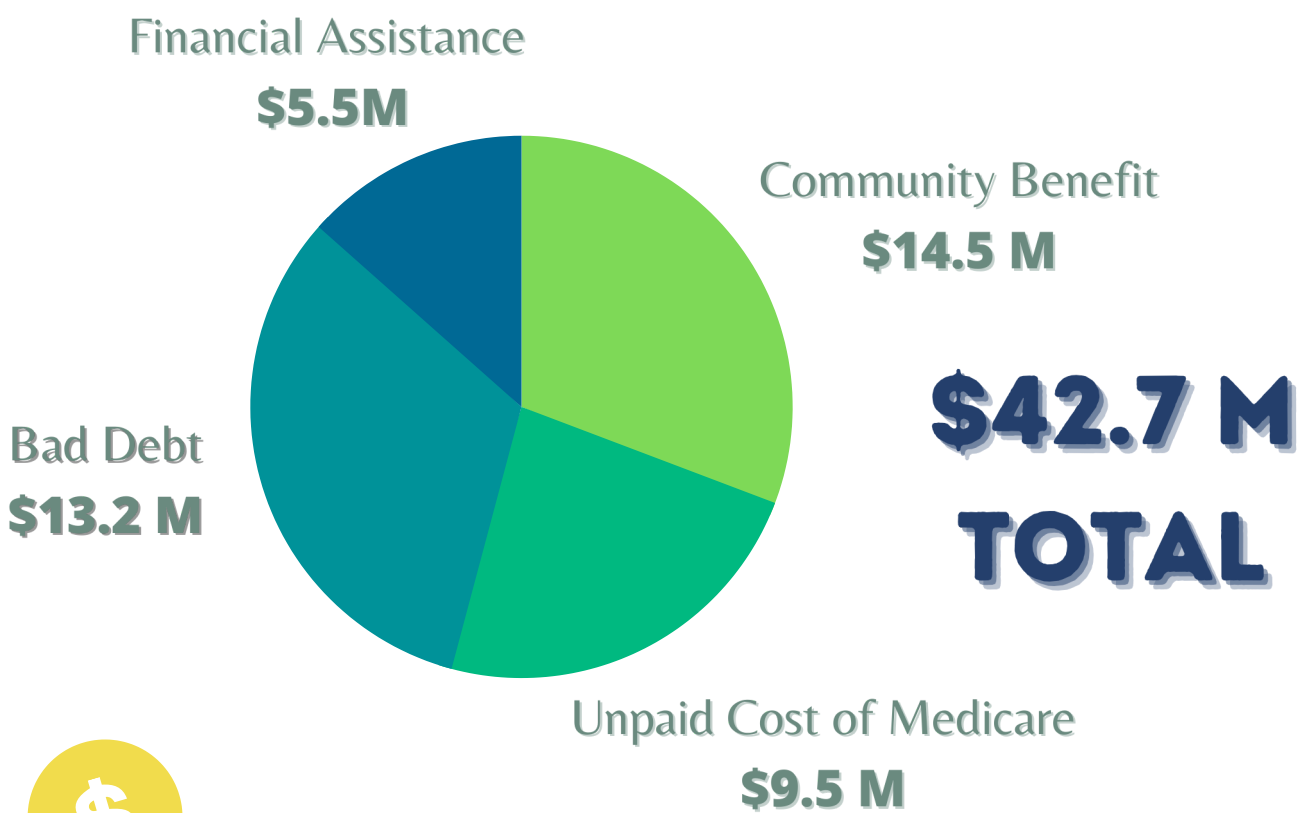


The Effect of COMMUNITY BENEFIT IN 2020



Wyoming Institute
of Population Health

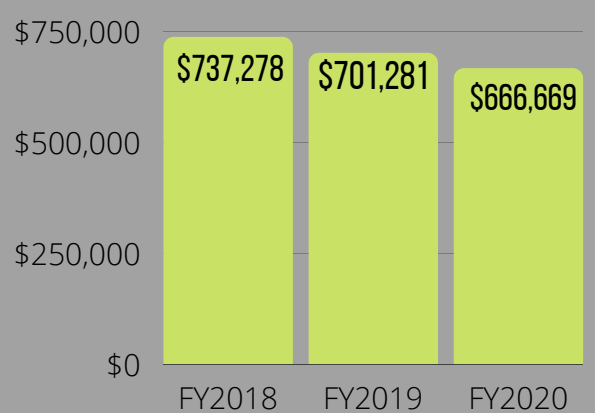
TOTAL FINANCIAL SUPPORT TO OUR COMMUNITY IN 2020:



Over \$23K

Over \$23K was spent to help patients with Prescription and Oxygen needs

COMMUNITY GRANTS AND IN-KIND DONATIONS



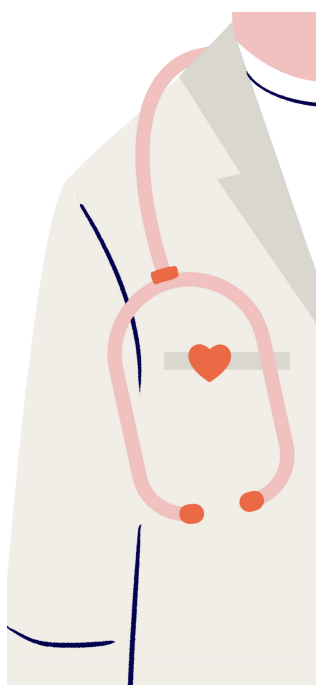
The CRMC Benefit Committee provides more than \$500K to Laramie County non-profits in grants last year

PROVIDE THE BEST CARE



HEALTH CARE EDUCATION

We provide over \$150K was spent on Pastoral Care, Residency and Scholarships for staff



SUBSIDIZED HEALTH SERVICES

\$8.9 million was allocated to services that include Trauma, Behavioral Health, Home Care, Hospice, Palliative Care and PACE.



Charity Care Program



As your not-for-profit county hospital, Cheyenne Regional Medical Center provides patient care regardless of ability to pay or insurance coverage. You may be eligible to receive care that is free or provided at a reduced cost through our Charity Care program, which is designed to help individuals who cannot afford the health care they need.

FINANCIAL ASSISTANCE

